

Agamemnon Otero



Co-founder

+44 (0)7960829826

@AgamemnonOtero

@RepowerLondon

@EnergyGardenLDN

@BrixtonEnergy













GET ON BOARD,
ENERGY GARDENS ARE COMING

Overground and National Rail
Platform 2

Clapton
St. James Street
Walthamstow
Central
Wood Street
Highams Park
Chingford



This is your
garden

With help from Repco
Groundwork London and TfL
50 Overground stations will

To make sure your local station
tweet #GreenMyOverground
to discover how you can
turning your station into a



WWW.ENERGYGARDEN.CO.UK
Where Community Gardening















Growing Home



Social return on investment

SROI Total Return Forecast Return

£1.00 = £1.04 Financial Return

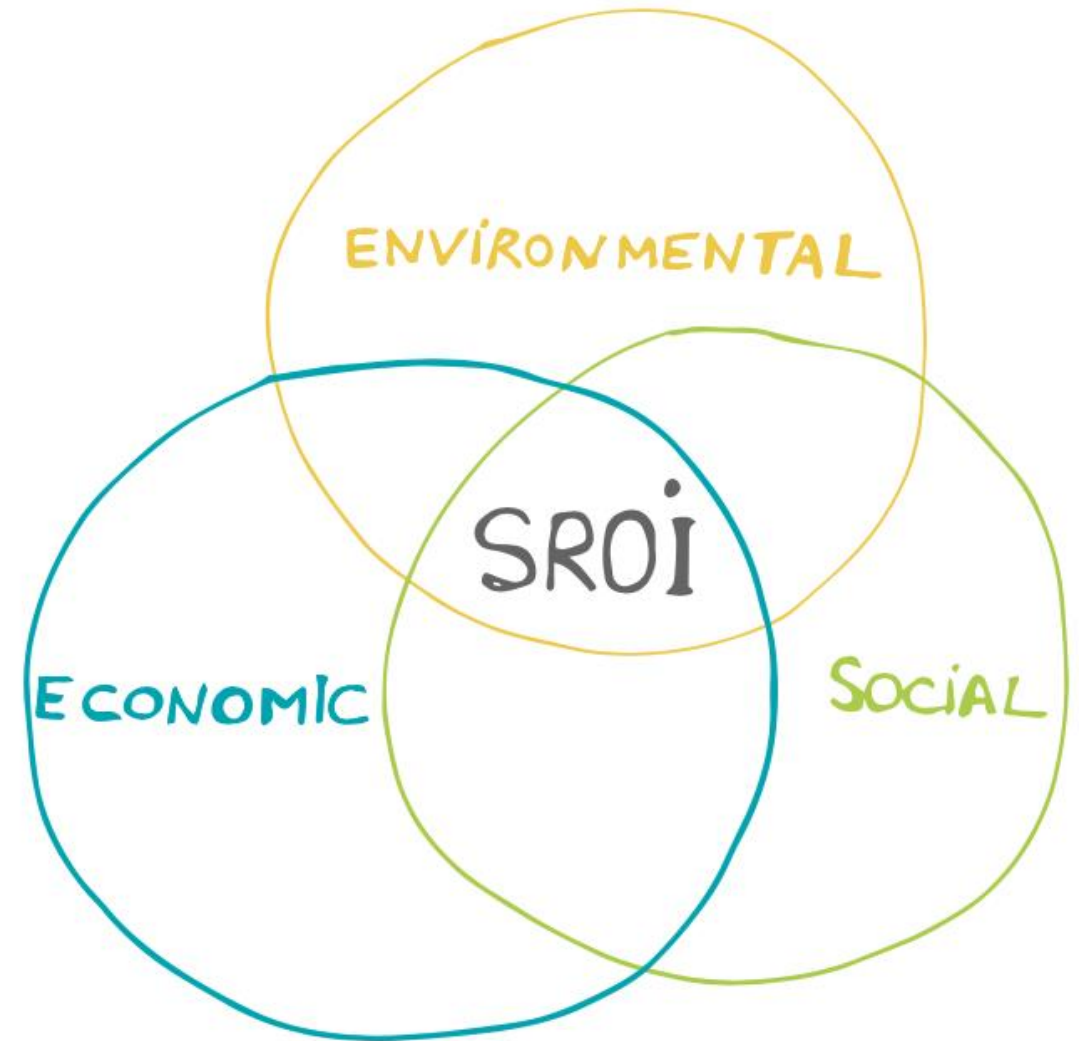
£1.00 = £1.00 SROI

£1.00 = £2.04 Total Return

£100,000 = £204,000 Forecast Return

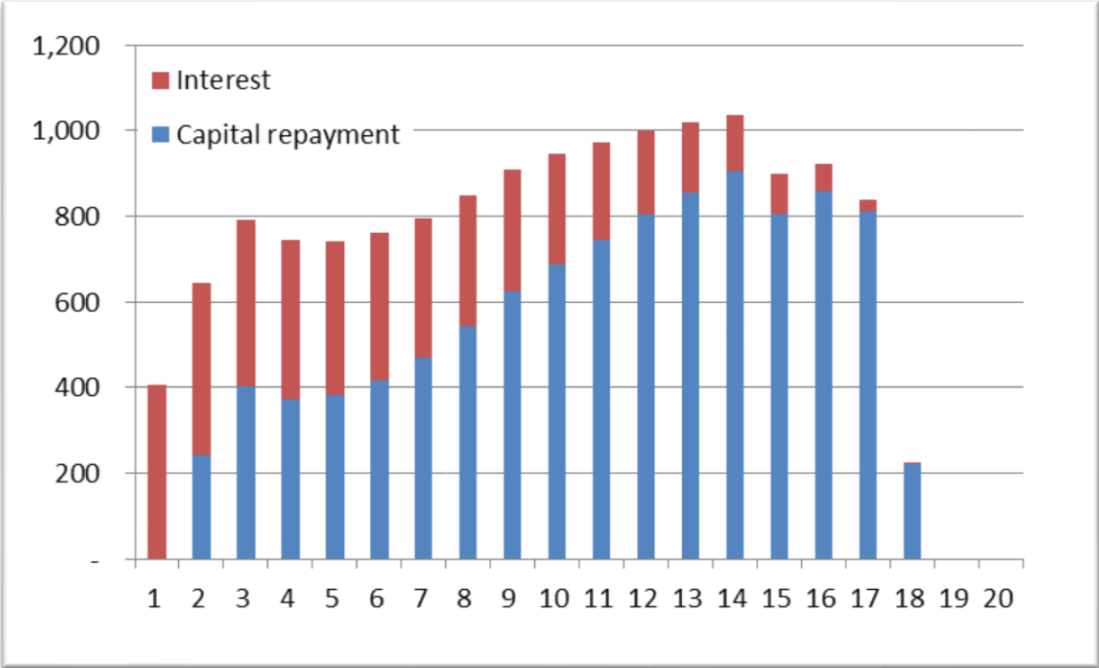
SROI is based on an analysis of:

- Perceived mental health
- Perceived physical health
- Perceived competence, engagement and purpose
- Sense of trust, belonging and Safety
- Learning new things
- Self confidence



Business Case: Translating to the Government & Corporate Sector

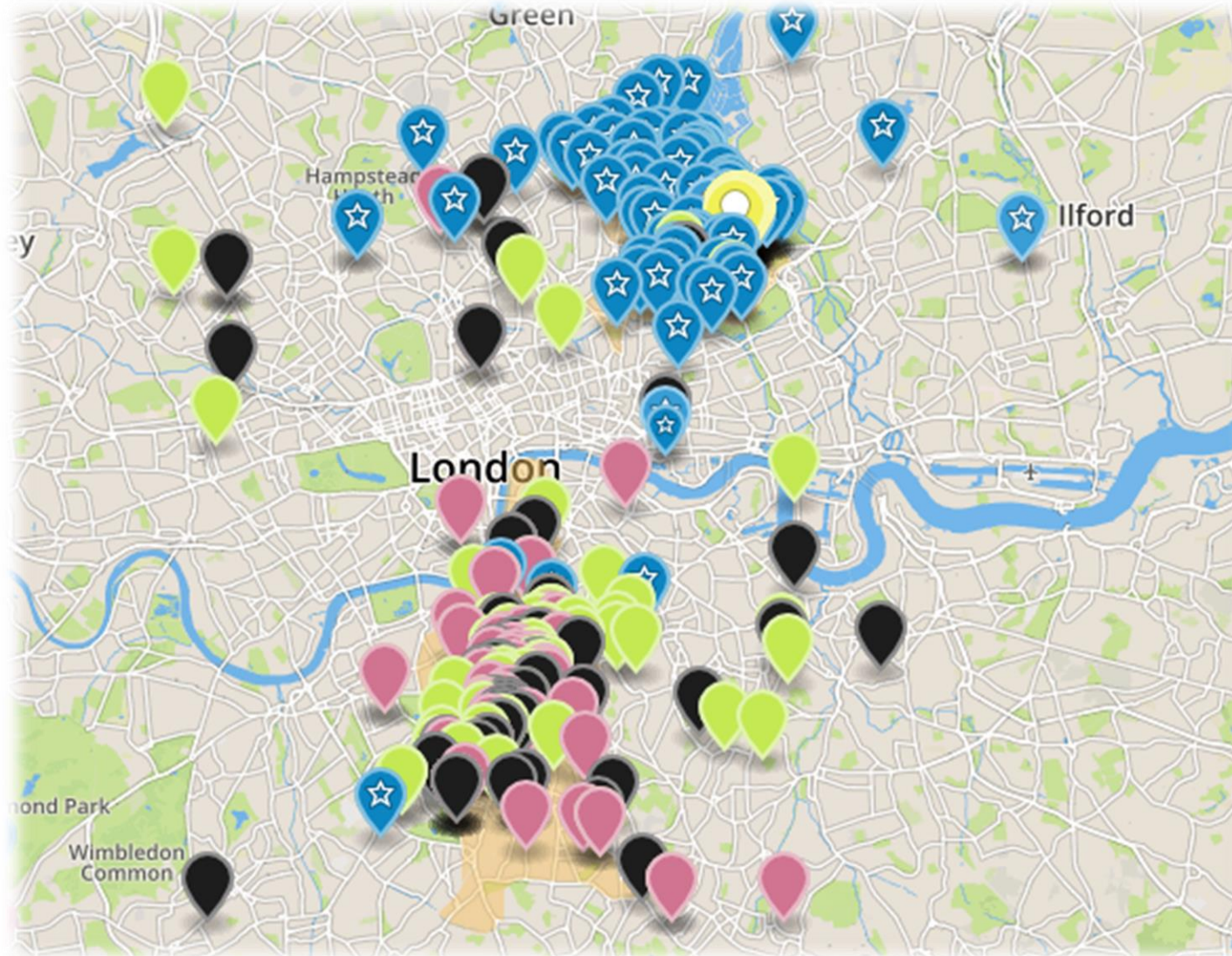
- Annual target interest rate of 3-4% on the outstanding principal
- Repayment of investment capital expected over 10-30 years, subject to available funds
- Final maturity of bonds at 30 years to ensure full repayment over term
- Figures show indicative payment schedule (interest and capital) for a £10,000 investor








A £10,000 SHAREHOLDER GETS	Year 1	Year 2	Year 3	Year 4	Year 5	Years 6-20
Share interest	£405.23	£402.86	£389.48	£373.89	£358.83	£2,421.42
Capital repayment	£-	£240.55	£402.32	£372.26	£382.35	£8,746.53
Total	£405.23	£643.42	£791.80	£746.15	£741.17	£11,167.95
Cumulative	£-	£643.42	£1,435.21	£2,181.36	£2,922.54	£14,090.48



Mapping our investors



-  Brixton Energy 1 Investor
-  Brixton Energy 2 Investor
-  Brixton Energy 3 Investor
-  Banister House Investor
-  Banister House Resident Investor





Before & After





itv NEWS



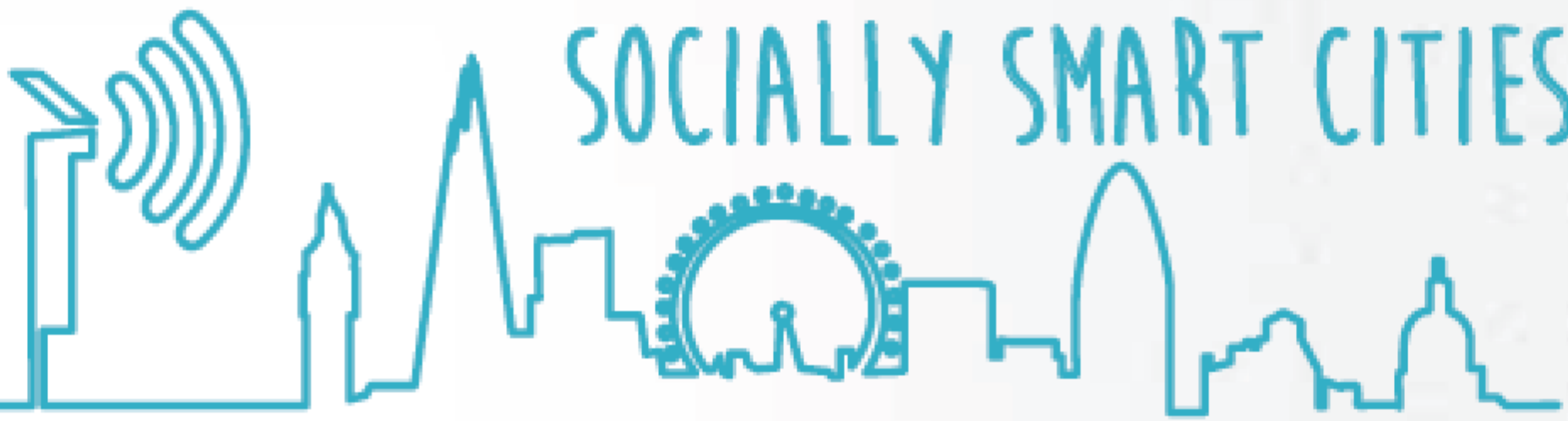




A British Transport Police spokesman said: 'We are investigating reports of a couple engaging in sexual activity on a platform at Hackney Downs station'. The copulating couple casually caught the train just moments after the incident



SOCIALLY SMART CITIES





**THE PROJECTS GENERATE
INCOME TO PAY FOR:**

Horticulture,
Air quality,
Biodiversity, Education
Programmes

A reasonable
return
on investment

Funding for
Administration costs



Agamemnon Otero



Co-founder

+44 (0)7960829826

@AgamemnonOtero

@RepowerLondon

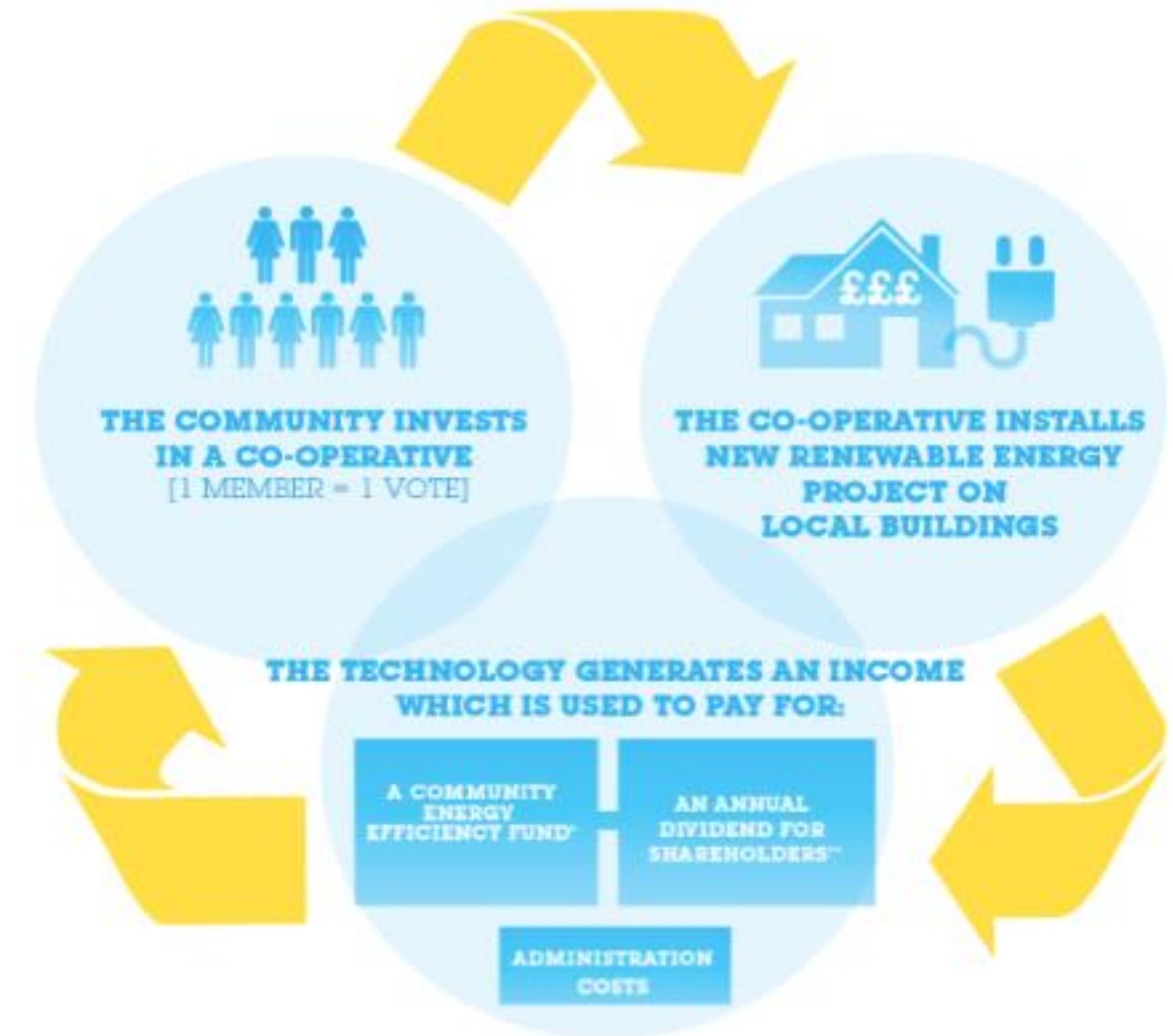
@EnergyGardenLDN

@BrixtonEnergy



Community Energy Model

- Inclusive
- Democratic
- Sustainable
- Responsive
- Local ownership, control and benefit
- Resilience
- Jobs and skills
- Generation, reduction, efficiency, supply





What we do?

1. Strategic context
2. Resource planning
3. Governance
4. Project plan
5. Engagement
6. Co-production
7. Fuel poverty initiatives
8. Renewable Energy Cooperative





Social works programme



Asking what people want.

Community Engagement

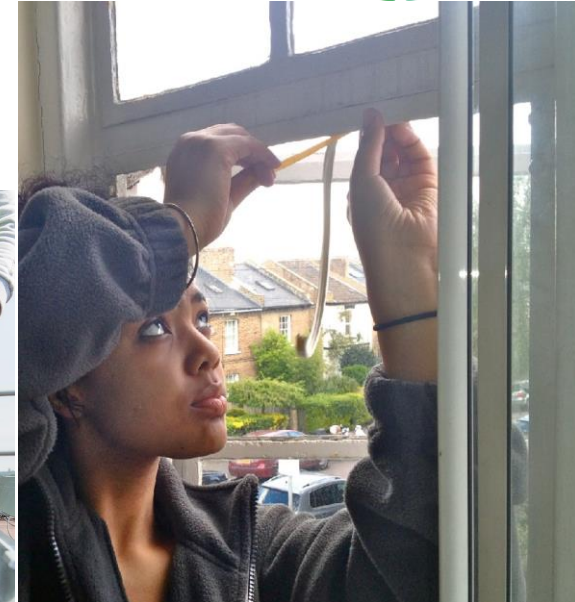
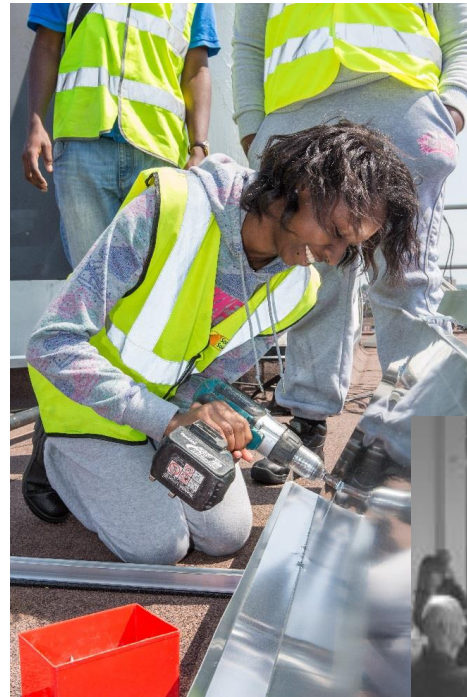
- Existing networks
- Door knocking
- Energy surveys
- Events

Co-production

- Mentoring sessions
- Monthly public meetings
- Energy efficiency workshops

Training

- 30 week internship
- Energy efficiency training
- Paid work experience





Who we are



- **REPOWERING** is a **Community Benefit Society**
- **Creating local energy:**

We specialise in co-producing **community-owned renewable energy** projects

- **Our Vision:**
- To **create resilient, empowered communities** that control and own the generation and usage of renewable energy.