

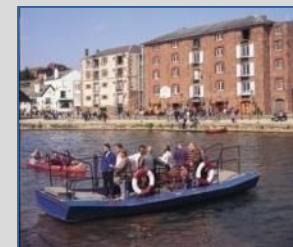
District Heating in the Greater Exeter Area

October 2016





“Our vision is to realise the **full economic potential** of Exeter and East Devon – to provide a **range of employment opportunities** alongside a **self-sufficient new community** where people will have the ability to **live close to where the majority of jobs will be provided**”





Exeter
City Council



Exeter and East Devon Growth Point

Programme of developments

UNIVERSITY OF EXETER STREATHAM CAMPUS
£380m capital investment programme including new state-of-the-art facilities and redevelopment at the heart of the campus

CITY CENTRE REDEVELOPMENT
A new leisure quarter focused on the bus and coach station site

EfW PLANT
Energy from Waste facility producing enough electricity to supply around 5,000 homes and a potential to run a district heating scheme

MATFORD GREEN BUSINESS PARK
27 acres of prime commercial development land – planning permission secured for 46,500 m² of mixed employment and support services space

REDHAYES BRIDGE
Award-winning pedestrian and cycle bridge linking developments

PINN COURT AND PARK FARM
New housing developments of up to 800 new homes and supporting community facilities

PINHOE QUARRY AND IBSTOCK BRICKWORKS
New housing developments of up to 610 new homes

MONKERTON MASTERPLAN
New community of 2,300 homes

CANAL AND QUAYSIDE
Outdoor activity and water-based leisure destination, £5m outdoor centre

JUNCTIONS 29 AND 30 IMPROVEMENTS

SANDY PARK STADIUM
Home of Exeter Chiefs and host venue for Rugby World Cup 2015

NEWCOURT MASTERPLAN
New community of 3,700 homes

SOUTHWEST EXETER URBAN EXTENSION
A mixed use neighbourhood of 2,500 homes community facilities and employment space

TITHEBARN GREEN
A development of 580 homes, a new link road, an employment area, park and ride facility, local centre/square, health and fitness centre, creche, public and private open space

INTERMODAL FREIGHT TERMINAL
An intermodal rail freight terminal to include a distribution warehouse for Sainsbury's and potential for a bulk air, rail, road freight interchange

CRANBROOK
New community of up to 6,000 new homes with a low carbon district heating network, community buildings, schools, a town centre, rail stop and country park

E.ON ENERGY CENTRE
Hub of a ground-breaking district heating scheme to provide a lower carbon energy source for Cranbrook and Skypark, potentially saving 13,000 tonnes of CO₂ a year

CLYST HONITON BYPASS

FLYBE TRAINING ACADEMY AND HILTON HOTEL
State-of-the-art training facility for the aviation industry and 120-bed Hampton by Hilton Hotel

EXETER INTERNATIONAL AIRPORT
Planned enhanced passenger facilities

SKYPARK BUSINESS PARK
£210m sustainable business park with the potential to create 6,500 jobs including office, industrial and manufacturing space

EXETER SCIENCE PARK
A world-class science park providing services for knowledge intensive firms with the potential to create 3,000 jobs



KEY

- NEW COMMUNITIES
- STRATEGIC EMPLOYMENT SITES
- EDUCATION
- LEISURE/RETAIL
- ROAD IMPROVEMENTS

For the latest visit exeterandeastdevon.gov.uk

@eedgrowthpoint facebook.com/eedgrowthpoint Find us on LinkedIn



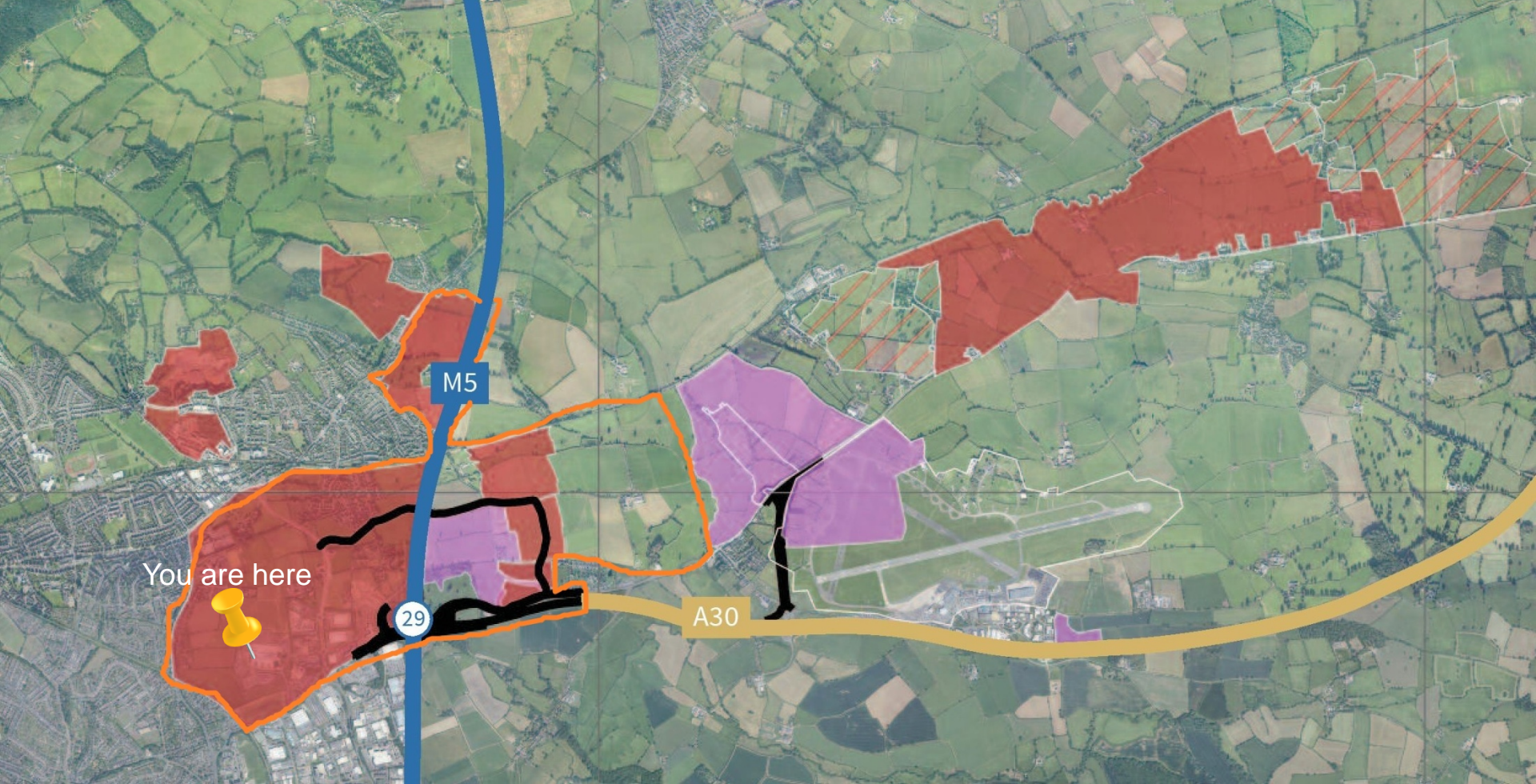
© Crown copyright and database right. 2010 Ordnance Survey 100012386

Exeter and East Devon Growth Point

a partnership for growth



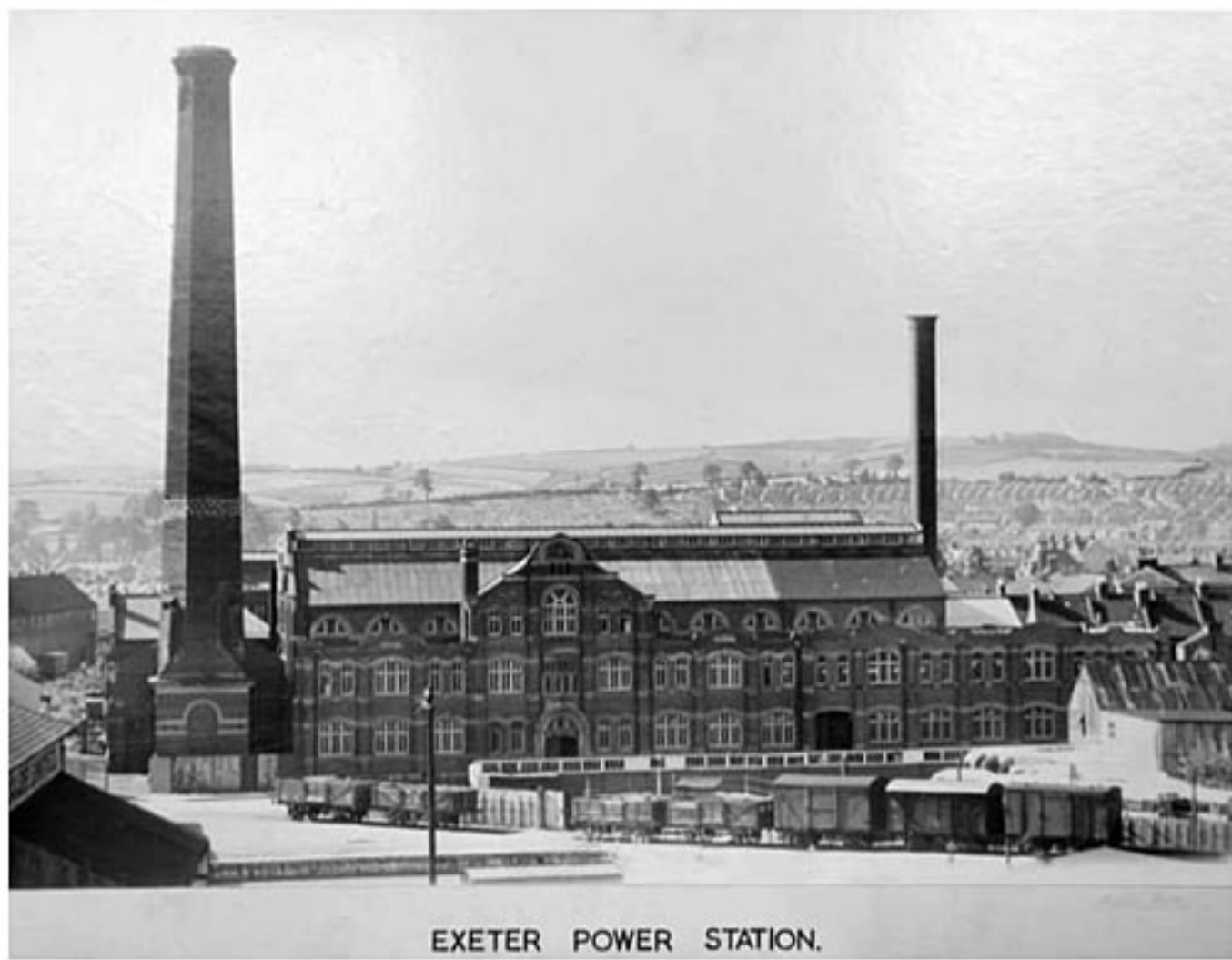




East of Exeter DH network

Exeter and East Devon Growth Point

a partnership for growth



DEXTCO

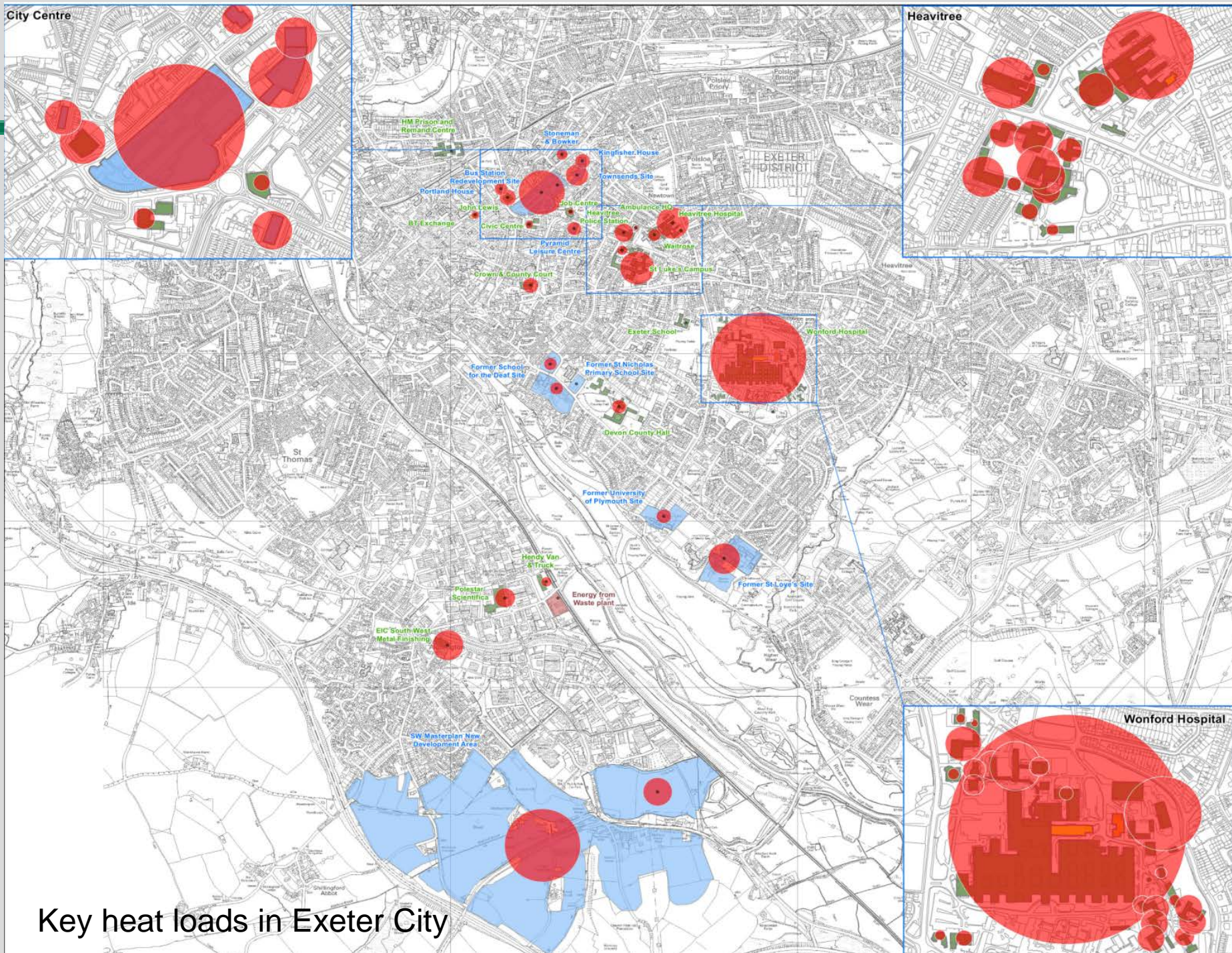
- Dedicated delivery vehicle
- Business case/model
- Commercial partner
- Clear governance structure
- Supporting resilience
- Low carbon economy
- Influence/control

Partners



City Centre

Heavitree



Key heat loads in Exeter City

a partnership for growth

Questions?



Picture courtesy of @RAFRed8 - Aug 2014