

# Community energy training:

## Accessing funding for community energy projects

# Agenda

10:00 **Welcome**

George Middlemiss, local energy analyst, Regen

Conor Edwards, local system planning engineer, Northern Powergrid

10:10 **An introduction community energy funding**

Lisa West, memberships and operations, Community Energy England

10:20 **Top tips on funding applications from a community organisation**

Adele Borrowman, grant fundraising enabler, Yorkshire N & E Methodist District

10:35 **Innovative crowdfunding: the Spacehive community funding platform**

Kinza Hussain, programme executive, Spacehive

10:50 **Breakout group discussion**

Facilitated by Regen

# Agenda

- 11:10 Tea break**  
Exploring participants experiences with planning.
- 11:15 Understanding share offers for community energy projects**  
Paul Phare, development manager, Energy4all
- 11:30 Strengthening applications to the Community Energy Fund**  
Abbie Raynes, project manager, North East & Yorkshire Net Zero Hub
- 11:45 Panel session and Q&A**  
An opportunity to ask questions to the panel.
- 11:55 Feedback and close**

# Net Zero Community Energy Fund 2024

- Grants of between £1,000 and £10,000 for capacity building.
- This could be... accessing training, expertise and mentoring, conducting feasibility studies or installing low carbon technologies!
- We are open to your ideas for support that will help your community achieve net zero or identify actions to achieve net zero, and we want to support you to develop these ideas further.
- Applications open in April and run until mid July.
- Apply online soon!

# What we've got coming up this year

## **Northern Powergrid Regional forums**

- March 2024

## **Net Zero Community Energy Fund**

- April 2024

## **In-person community energy forums**

- 3rd & 4 July 2024

## **Online training session**

- 3rd October 2024

## Regional decarbonisation workshops: Join us to discuss the future of the energy network

Join us to discuss how Northern Powergrid is enabling decarbonisation in *your local region*.

We want to hear from you:

- What are the key issues facing you or your organisation in relation to decarbonisation?
- How much do you know about our decarbonisation plans in your area and what do you think of them?
- What could Northern Powergrid do to remove barriers to decarbonisation in your region?

Hear from regional colleagues, connections teams and our distribution system operation team.

[Upcoming Events | Engage \(northernpowergrid.com\)](#)



# Community Energy England

**Lisa West**

Membership & Operations Officer



# Community Energy England

Please join us:  
▶ [bit.ly/Join-CE](https://bit.ly/Join-CE)

Community Energy England is the national network and representative body for community energy.

- A voice for the sector.
- We provide opportunities and mechanisms for active community energy practitioners in all parts of England to connect, learn, share business models and help each other overcome obstacles.

295+ members - Community energy organisations, sector stakeholders and other supportive organisations





# Funding Landscape

## Community Energy Fund

Government CEF of £10 million until March 2025 - £9m in actual grants for feasibility and development of investible projects, including energy efficiency.

CEE will be lobbying for a CEF 2 if this government stays in power. A significant increase in funding is needed for the sector.

## Policy

- If Labour gets in their Local Power Plan pledges £400m (on average) a year in low interest loans to communities alongside £600m a year in grants to Local Authorities.
- Election planning to help raise the importance of the government supporting community energy
- CEE is campaigning for the Energy Redress Main Fund



# Funding Landscape

## Funding Categories

1. Feasibility
2. Grant Funding
3. Large Scale Central Government Funds
4. Established Community Energy Organisations

## Examples of Key funding streams

- Community Energy Fund
- West Yorkshire Community Climate Grants
- Community Partnering Fund - (Leeds Community Foundation, Northern Gas Network and Northern Powergrid)
- Energy Redress 'Innovation' and 'Carbon Reduction' grants. Rounds are roughly quarterly.
- Awards4All and The People's Postcode Lottery (supporting staff and employment costs)
- Community share offers



Browse funding opportunities on the CEE website

► [bit.ly/CEE-Funding](https://bit.ly/CEE-Funding)

# How CEE can support you

## Policy & Advocacy

▶ [bit.ly/3uZxqqL](https://bit.ly/3uZxqqL)

## Online Practitioners Forum (Loomio)

▶ [bit.ly/CEE-Loomio](https://bit.ly/CEE-Loomio)

## Community Energy Fund webpage

▶ [bit.ly/CEFUND2023](https://bit.ly/CEFUND2023)

## Promote your community share offers and events

▶ [bit.ly/CEE-Share-Offers](https://bit.ly/CEE-Share-Offers)

▶ [bit.ly/CEE-Submit-Event](https://bit.ly/CEE-Submit-Event)

## Browse funding opportunities

▶ [bit.ly/CEE-Funding](https://bit.ly/CEE-Funding)



# Top Tips & Key Takeaways

- Think about the best funding route and funding category for your organisation's needs
- Ask your DNO about their community funds
- Build strong relationships with your Local Authority - some funds will come via them
- Watch CEE's grant application webinar from CEF 2023 and the top tips guide that followed the webinar
- Speak to your local MP and organise a site visit
- Keep up to date with new funding opportunities on our website and join us to receive regular updates in our member newsletter

Browse funding opportunities on the CEE website

▶ [bit.ly/CEE-Funding](https://bit.ly/CEE-Funding)

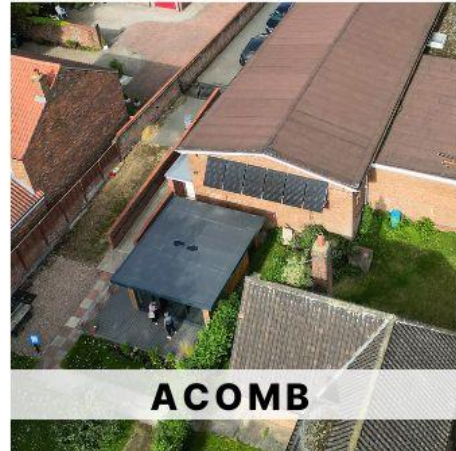
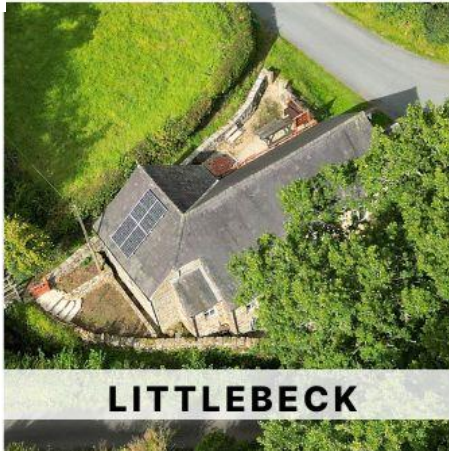
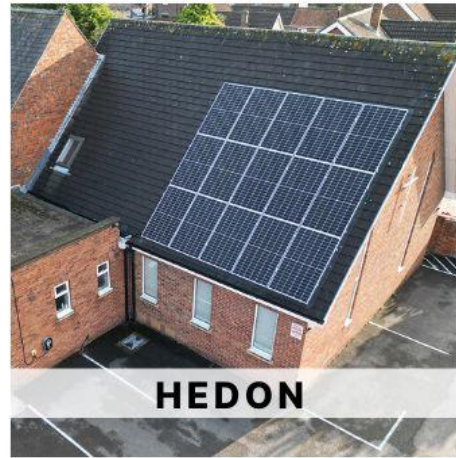
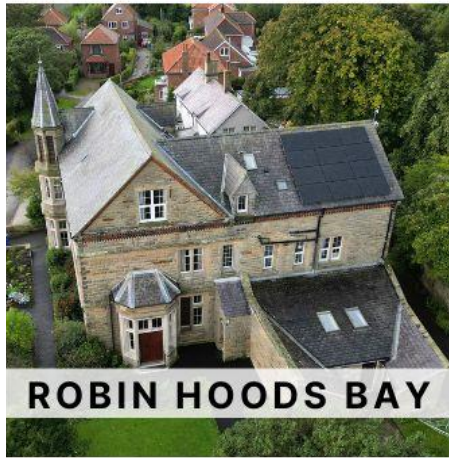


# Any questions?

Lisa West – [l.west@communityenergyengland.org](mailto:l.west@communityenergyengland.org)

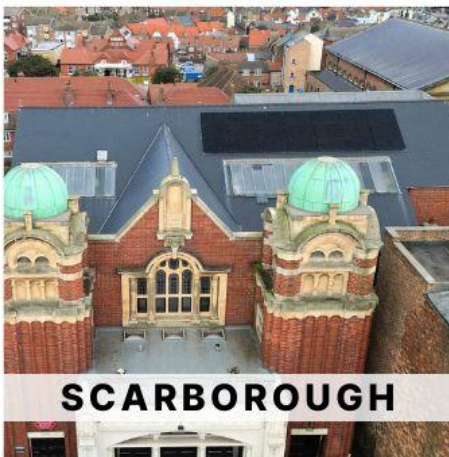
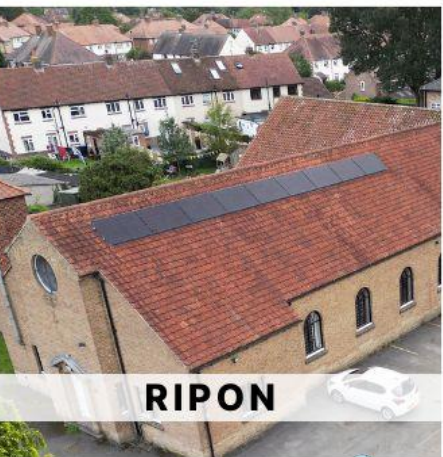






# Net Zero Funding

Adèle Borrowman,  
Grant Fundraising Enabler



## Lessons from Yorkshire N&E Methodist District





# About Us



- 200+ Methodist Churches
- Across North & East Yorkshire
- 7,500 members
- Most footfall through community use
- Seek to
  - challenge injustice
  - be a good neighbour to those in need





# Who uses our churches?



**WHO LET THE  
DADS OUT?**

**Guides**

*Slimming*  
WORLD

UK



**Men's  
Sheds**  
Association

**age** UK

*mind*

 **British Heart  
Foundation**

**Ryedale  
Community**  
**FOOD  
BANK**

**Ryedale  
Free  
Fridge**

**theWI**  
INSPIRING WOMEN

**ROCK  
CHOIR**



**kyra** women's  
project



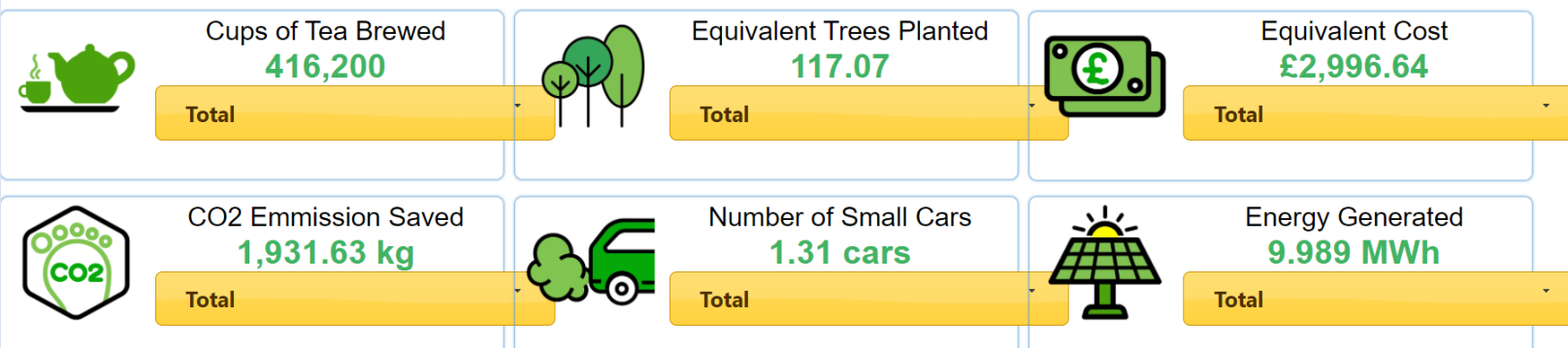
# Projects to date



- 28 of 200 Churches with roof-top Solar PV
- 18 Churches' installations through District projects
- £1.2m raised through grants for Net Zero projects since 2020
- 10 installed with solar monitoring to date



*Data for Portholme Church, Selby:*





# Tea & PV Methodist Churches



Ripon



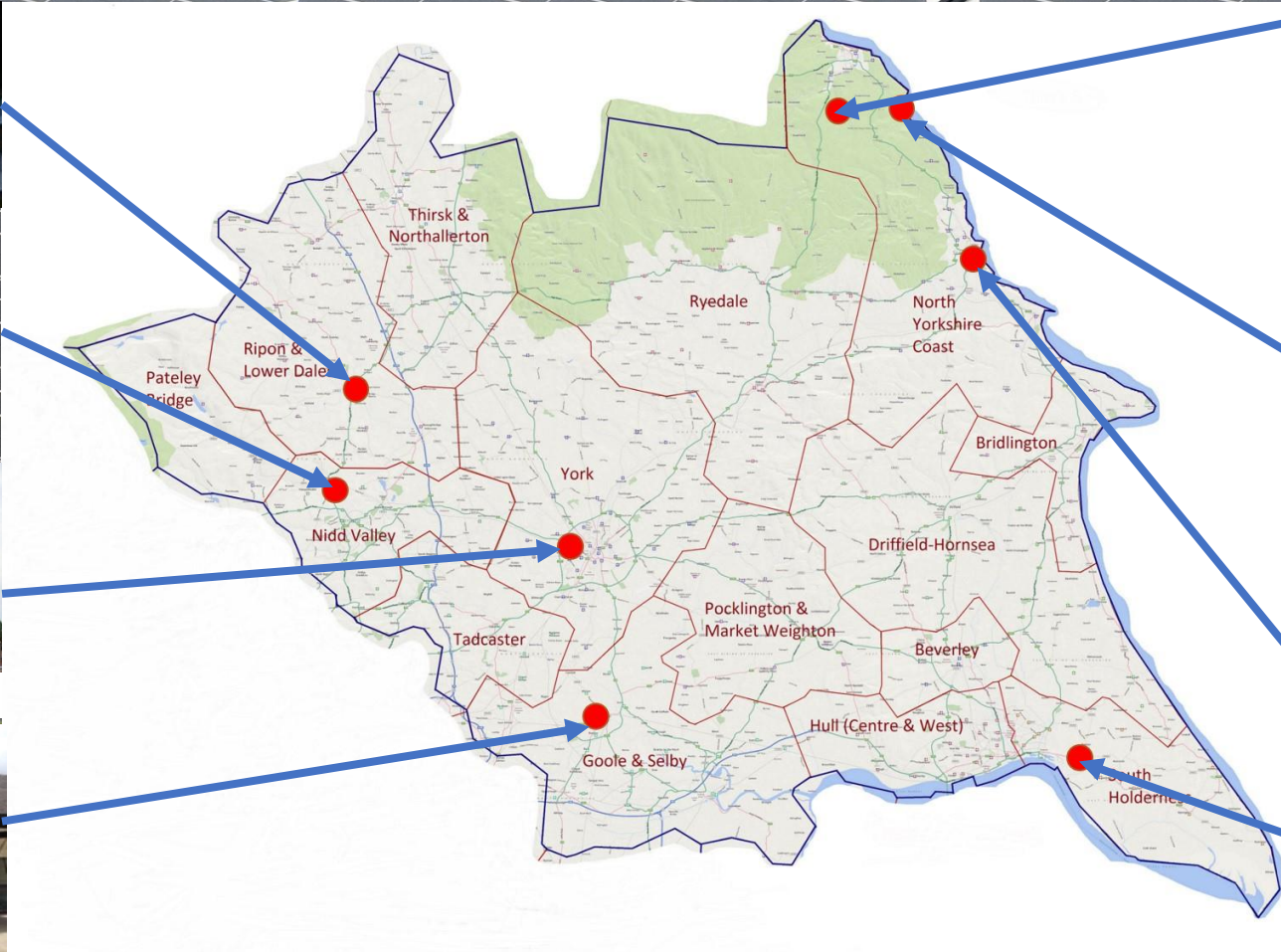
Killinghall



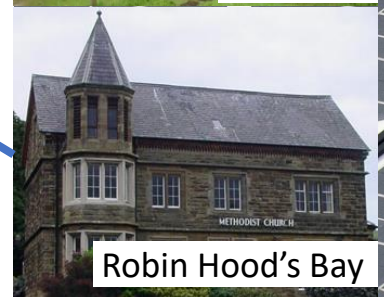
Acomb



Selby



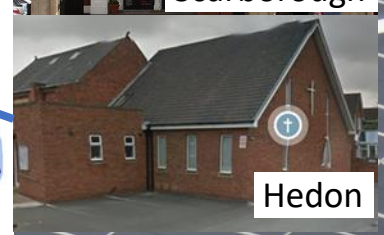
Littlebeck



Robin Hood's Bay



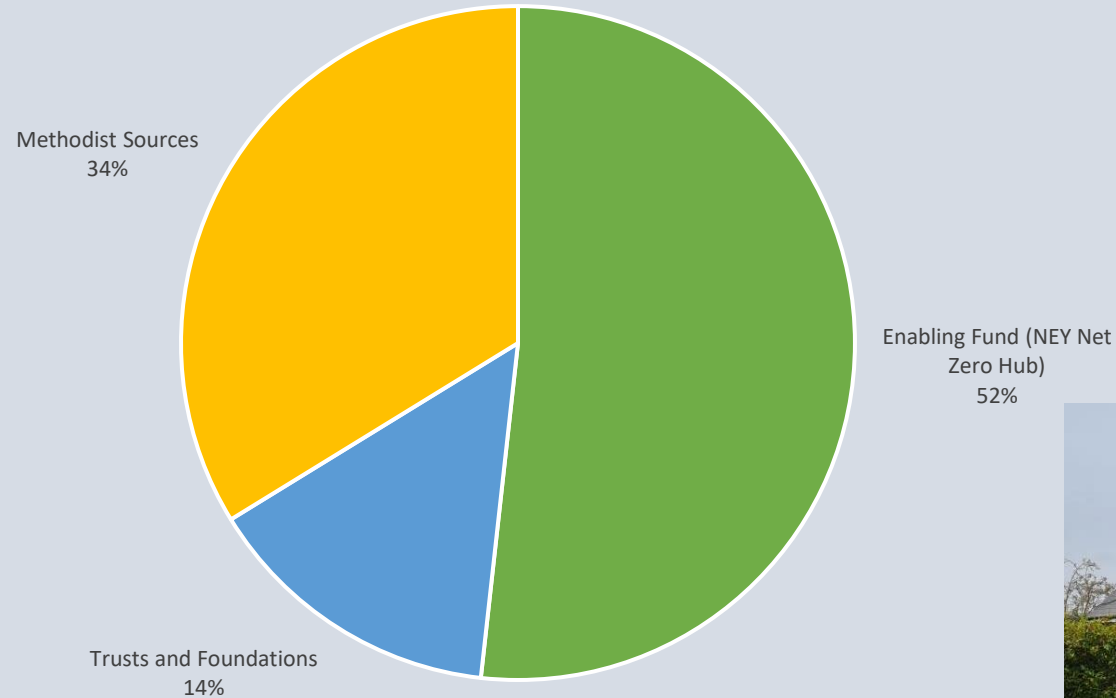
Scarborough



Hedon



# Three Church Solar Project, South Holderness



- **Project Cost: £62,290**
- Output: 28kWp Solar panels, 10kW battery across three churches
- Hull area: one in top 1% of UK deprivation, one suburban and one rural

# Types of Funding – Community Buildings

- Statutory & Government Related Sources
  - Regional Net Zero Hubs - [North East](#), [North West](#), [Midlands](#) and [South West](#), [Greater South East](#)
  - Landfill Communities Fund
  - UK Shared Prosperity Fund
- Trusts and Foundations
  - Over 8,000 in UK, giving £2.7bn pa
  - Raise >30% before applying
- Other Opportunities
  - Northern Powergrid
  - Energy for Tomorrow, Centrica

Part funded by the North East and Yorkshire Net Zero Hub



And with grateful thanks for funding from:



Delivered by:





# Finding Funding

- No single source
- Start online, then make contact by phone or email
- Subscribe to updates and bulletins

## Online Resources

- [Community Energy England](#)
- [Charity Excellence Framework](#)
- [UK Community Foundations](#)
- [Benefact Trust - Advice and Resources](#)
- [TCC Monthly Bulletin](#)

## Make contact with:

- Regional Net Zero Hub
- Local Council for Voluntary Services (grant search)
- Local Authority – including UK Shared Prosperity



# Top Tips

Don't:

- Write until you've formed your project
- Make your project something it is not, to suit the guidance



Do:

- Read the Guidance, each and every time
- Three things to know inside out:
  - your organisation
  - your funders
  - your project
- Be: honest, optimistic, realistic, collaborative,
- Keep going, even when unsuccessful....picture success!
- Get feedback, learn from it
- Be kind: someone has to read and score your submission!





# spacehive

the home of community fundraising







×

*spacehive*

Accessing funding for  
community projects



Friday 8th March at  
10am



*spacehive*



Power to  
the people



Spacehive is a fundraising platform for community projects.

Our mission is to make it easy for people to improve their local area.

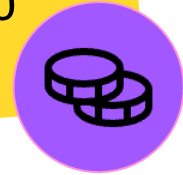
We believe in the power of local people and their ideas to transform communities.



# Local people transforming local places

**£30 million**

raised to date from over 2,000  
local ideas



**85%**

of projects hit their fundraising  
target



**65%**

of project creators are fundraising  
for the first time



Develop new skills



Create new connections



Raise your profile



**“Crowdfunding has given me real confidence - I can actually say I am a social entrepreneur”**

Ursula



**“Crowdfunding provided an opportunity for the whole community to come together”**

Louise



**“Lots of funding goes to large organisations. What crowdfunding has done is said we matter”**

Leyla

## Fuelling your ideas



Workshops  
& events

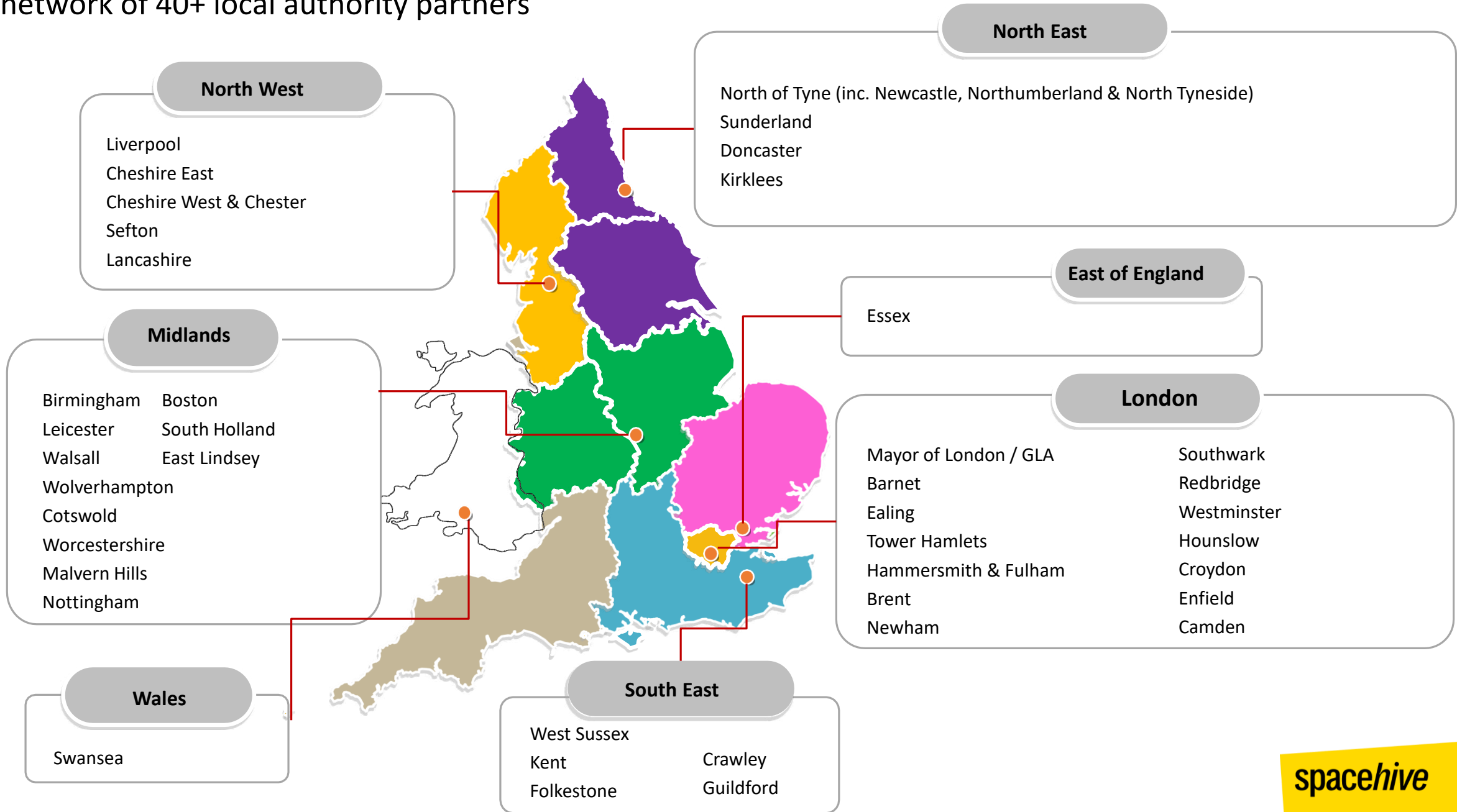


Advice  
& support



Funding to turbo-  
charge  
your campaign

# Our network of 40+ local authority partners









## Kielder Observatory Wind Turbine

Raised over £30,000 for a new wind turbine to keep Kielder Observatory running and to deliver over 700 public events per year




Supported by North of Tyne Combined Authority






The Jessie Hughes Village  
Hall

Raised over £14,000 for a  
12kWhr battery to store  
electricity generated by  
recently installed solar panels



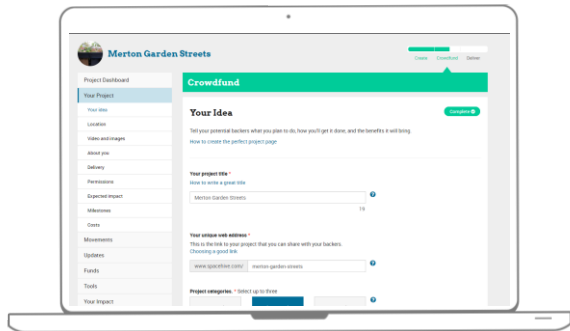
Supported by Cheshire  
West and Chester Council



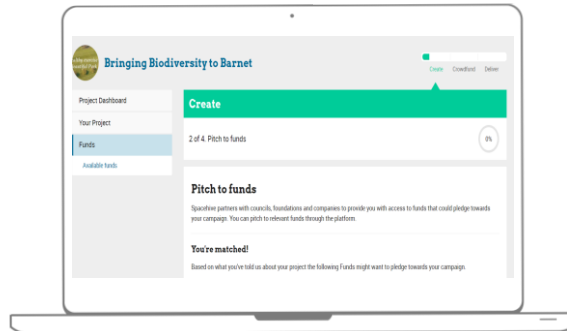
*spacehive*

# The crowdfunding process

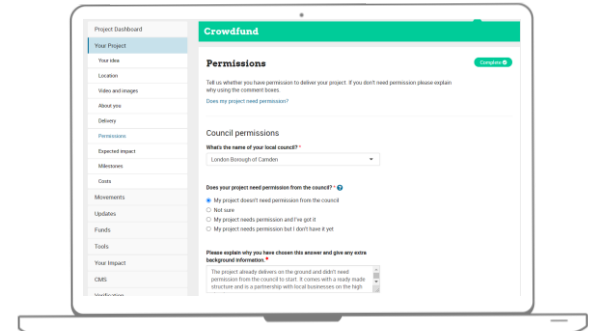
Create



Pitching to funds



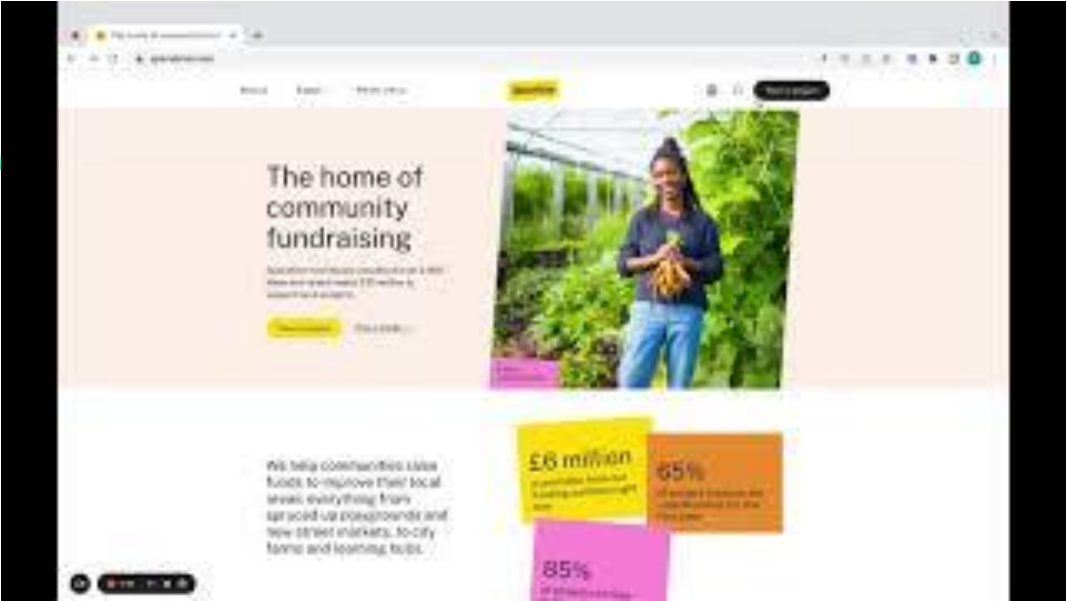
Verification —  
Permissions & Costs





# WATCH: How do I create a project?

A step-by-step video guide on how to launch your project on Spacehive



**CLICK: How do I create a project?**

To help get your project up and running, we've pulled together the following resources:

**Video** - [How do I create a project?](#)

**Video** - [Creating the perfect project page](#)

**Video** - [How do I pitch to a fund?](#)

**Video** - [How do I cost up my project?](#)

**Article** - [How verification works](#)

Find more tips on our [Help Centre](#)



**spacehive**

## Upcoming funding rounds

- **Pitch deadlines**
  - [Crowdfund North of Tyne](#)- 22nd March
- For all details on currently open funding windows, pitch deadlines and fund eligibility:  
<https://about.spacehive.com/movements/>
- To register for an upcoming Project Creator Workshop visit [Spacehive's Eventbrite page](#)





## Things to know

- Spacehive is an [all-or-nothing platform](#) = more funds, faster!
- In-kind contributions can be presented on your project
- There is a [5% platform fee](#) - not taken unless campaign is successful
- [Stripe](#) account set up and transaction fees apply
- Attract volunteers through your campaign
- Charities can collect [Gift Aid](#)
- [Pre-campaign/offline](#) funds can be added to your campaign

## Support for project creators

- Spacehive Help Centre provides step by step video guides and articles
- Live chat, workshops, project surgeries and email to connect with our team of crowdfunding experts
- Tap into a network of over 2,000 successful project creators across the UK for advice and inspiration



# Get in touch



Email - Phone - Live chat -  
Project Clinics

@Spacehive



support@spacehive.com



spacehive



# spacehive

the home of community fundraising

[spacehive.com](https://spacehive.com)

[support@spacehive.com](mailto:support@spacehive.com)

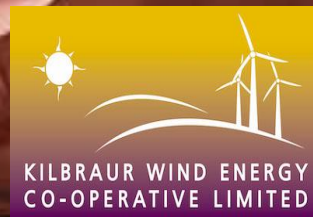


Copyright © Spacehive Ltd 2023. All Rights Reserved.

The information contained in this document is confidential, privileged and only for the information of the intended recipient and may not be used, published or redistributed without the prior written consent of Spacehive Ltd.

# Breakout groups







# Why Raise Project Capital With Community Shares?

## Common Misconceptions

- Because it's easy?
  - No!
- Because it's cheap?
  - Maybe!
- Because everyone else does?
  - Some do!
- Because there's no other option
  - Sometimes true

## Good Reasons

- It engages the community
- It builds capacity
- It builds resilience
- It builds accountability
- It builds an ethical business that serves the community
- **Equity is flexible, debt is not**



## chairman's letter

3 March 2014

## Dear Potential Co-op Member and Existing Members

This Share Offer Document sets out an exciting opportunity for the Northern Irish community to invest in Drumlin Wind Energy Co-operative Limited ('Drumlin') (the 'Offer') which, following the success of our initial share offer in 2012 ([www.drumlin.coop](http://www.drumlin.coop)) (now A Shares), will install an additional one or two wind turbines in locations in Northern Ireland, enabling you to:

- Generate renewable energy, helping tackle energy security and climate change;
- Support sustainable development in our community and contribute to meeting Northern Ireland's CO<sub>2</sub> targets;
- Support your local community financially;
- Invest in B Shares with a projected pre-tax relief return of approximately 8.6% over a 20 year investment period;<sup>1</sup> and
- Receive income tax relief equal to 30% of your initial investment under the Enterprise Investment Scheme. This raises the effective projected return to approximately 12.2% over a 20 year investment period.<sup>2</sup>

A Shares and B shares will participate in profits equally after 31 March 2015. B Shareholders will share only in returns from the additional wind turbines for the transitional period to that date, which are expected to be negligible. The benefit of the additional wind turbines for existing Drumlin Members is an increase in the average rate of projected return of over 1%.

This Offer is an approved offer under the Financial Services and Markets Act 2000. Energy4All Limited ('Energy4All'), which is assisting Drumlin with this Offer, is the leading social enterprise in the UK for establishing community owned renewable energy schemes. Energy4All won the prestigious 2012 Ashden Award for its work. Drumlin has been established and plans to run along similar lines to other successful Energy4All sponsored co-operatives.

All financial information in the Offer has been checked by Lamont Pridmore, a reputable firm of chartered accountants. Drumlin is an ethical, community-based, social enterprise designed to make sufficient profits to enable it to pay a reasonable financial return to its members and to construct a renewable energy source within the local community. We believe it has been a pioneer - as Northern Ireland's first community owned renewable energy co-operative. The opportunity to invest in Drumlin was recognised at the Northern Ireland Social Enterprise Awards 2013 where it won 'Best Social Investment Deal'.

Drumlin has the contractual right under an agreement with NRG Solutions to install an additional two wind turbines on separate sites. Each site has planning consent and a right to connect to the grid. The project will proceed if this Offer raises a minimum of £200,000 which, with loan finance, is sufficient to install one wind turbine. Drumlin also has broader goals: to tackle climate change by generating renewable electricity, to engage our community and to support our community financially.

We think the co-operative structure will appeal to those of you who may not have considered this type of investment before; it also works as a long term investment which, over a 20 year period, is capable of spanning the generations. Parents and grandparents can invest in Drumlin now for their children and grandchildren or can invest on their own behalf now and give their investment to their children and grandchildren at a later date or under their will.

The Offer will close when fully subscribed or on 30th April 2014.

## How to invest

An Application Form with details of how to invest is attached at the end of this Share Offer Document. The minimum investment is £250. The maximum investment is £20,000 (including any existing holding of A Shares). We have applied for confirmation from HM Revenue and Customs that the Shares issued by Drumlin qualify for relief under the Enterprise Investment Scheme, which would mean that, as one of the original wind turbines is now generating (and the others are expected to begin generating soon), Members who are eligible under the scheme should receive 30% of the value of their investment back in the form of income tax relief. Since Drumlin is already trading, EIS Certificates should be issued shortly after the Offer closes.

Please read this Share Offer Document and consider the risks, including those set out on page 8, before investing. You should consider taking appropriate financial and other advice before making an investment decision.

I look forward to welcoming new members and existing members through this Offer.

Yours faithfully

Nigel Brady, Chair Drumlin Wind Energy Co-operative Limited

<sup>1</sup> Projected returns are extracted without material adjustment from the financial projections set out on page 17.  
<sup>2</sup> Drumlin received EIS advance assurance for its first share offer. However, assurance for the current offer is not guaranteed. Most UK taxpayers will be eligible for EIS. Further information on EIS, including in relation to eligibility, is set out on page 28.

share offer

You are invited to **invest**  
in the second round of  
Drumlin Wind Energy Co-op



Offer Share: £1,200,000 [Closing Date: 30th April 2014]

CLEAN, GREEN ENERGY - PLANNING FOR THE FUTURE

## risk factors



All investment and commercial activities carry risk, and investors should take appropriate advice and make their own risk assessment whilst bearing in mind the social and environmental aspects of this investment opportunity. An investment in B Shares is an investment in a trading business not a loan or deposit. Attention is drawn to the following:

### General investment risks

- The value of your B Shares and income from them can fluctuate and you may not get back the amount you invested. Investment in smaller unquoted businesses is likely to involve a higher degree of risk than investment in larger companies and those traded on a stock exchange.
- B Shares will not be traded on a recognised stock exchange or otherwise and investors wishing to trade will be dependent on the introduction by the Board, at its discretion, of willing sellers with willing buyers, in accordance with the limited provisions under the Rules.
- B Shares can be redeemed by Drumlin at par value in accordance with the Rules but are not withdrawable by Members without prior approval from the Board, which cannot be guaranteed. If Drumlin lacks sufficient cash to enable B Shares to be withdrawn when desired, withdrawal may be delayed, or not possible. Investment in B Shares should be seen as a long term proposition.

### Renewable energy industry risks

- Government policy towards renewable energy may change.
- The buyout price for ROCs, currently expressed to be fixed to 2037, may change.
- The value of the recycled ROC element of income may reduce further as the industry develops.
- New inventions and developments may render existing technologies and equipment obsolete.
- Assumptions of future electricity prices used in the Financial Projections may be incorrect.
- Long-term changes to weather patterns may reduce the availability of wind which could result in lower levels of electricity generation and therefore income.
- Atypical short-term weather conditions could affect expected levels of electricity generation and therefore income, although overall patterns outside anticipated parameters are unlikely.
- Although modern Wind Turbines are extremely reliable, mechanical or technical failure can interrupt the generation of electricity or the distribution network and lead to unexpected costs. Manufacturer warranties and guarantees, and regular servicing, usually offer some protection.



Director, Paul Phelan Inside Cavanonall Wind Turbine

## Taxation of Drumlin

Drumlin does not anticipate having any liability for corporation tax for at least the first 17 years of trading as it should receive capital allowances on its capital expenditure on Wind Turbines, against which it will be able to offset the corporation tax which would otherwise have been payable, and because the payment of interest on Shares to Members by Drumlin is tax deductible. Drumlin is registered for VAT.

## Financial Projections

The following is a summary of the Financial Projections, which have been approved by the Board.

The Financial Projections are based on information provided by NRG Solutions and Energy4All and tested against independent data, including an independent on-site wind assessment by Gerard Hassan and Wind Consultancy, as far as circumstances have reasonably allowed. The Board has made an adjustment to the on-site wind assessment by Gerard Hassan on Ballyrobert which slightly increases the projected wind speed for the Sites for the purposes of the Financial Projections. The adjustment has been made because Gerard Hassan use standard assumptions with regard to on-site electrical losses which generally apply to larger scale wind farms. These on-site electrical losses have been reviewed by NRG Solutions and an adjustment has been made, which in the view of the Board is likely to more accurately reflect the single Wind Turbine installations which comprise the Project and the Wind Turbines which are proposed.

The Financial Projections are also based on contracts entered into on the Original Project, tender responses on the Additional Sites, and estimates received, supported by the expertise of Energy4All. The Directors take responsibility for the reasonableness of the Financial Projections.

Returns to Members are calculated according to projected levels of income and expenditure during the life of the Project. The Financial Projections are based on key assumptions, which are summarised below. The annual amount available for payment as interest on Shares is divided by the number of Shares in issue to give:

A projected gross return of approximately 8.6% over a 20 year investment period. If income tax relief under EIS is available, which is equal to 30% of a Member's initial investment this raises the projected return to approximately 12.2% over a 20 year investment period.

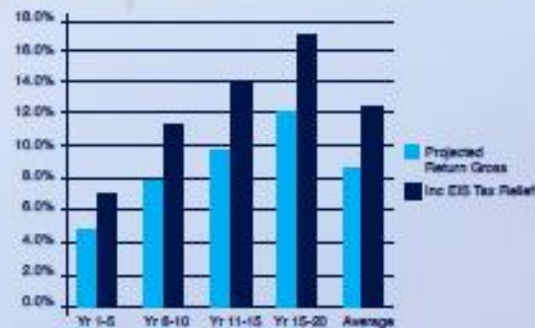
The Financial Projections are based on the assumption that the Application Monies will be sufficient for Drumlin to purchase and install both Wind Turbines. In the event that the Application Monies only allow Drumlin to purchase and install one Wind Turbine, then the projected level of returns to Members are no lower than for two Wind Turbines.

Drumlin intends to repay all its Member capital by year 21, after which all profits of Drumlin will be used for the benefit of the Northern Irish community.

The table below is based on Financial Projections of the four turbines from the Original Project and the two Additional Turbines under this Offer.

Year	Year 1	Year 2	Year 3	Year 4	Year 5	Years 6-10	Years 11-15	Years 15-20	Average
Projected return	3.4%	4.3%	4.7%	5.7%	6.2%	7.8%	9.7%	12%	8.6%

The Original Project projected a 20 year average return of 7.2% with 3.9% in year 1. The table above projects a return of 3.4% in year 1 because it does not represent a full year's operation from all turbines. The benefit of taking on the Additional Turbines for Drumlin Members is that returns over a 20 year period are projected to be higher for each year after the first year of operation, giving an average projected rate of return over the life of the Project of 8.6%, an increase of over 1% on the Original Project.





# How to get started! Should I?

---

- Where are you in the development cycle?
- Do you have a business model?
  - Are we sure?
- Do you do this yourselves or work with a partner?
  - What is the capacity of your group?
  - What is the time availability within your group?
  - What is the experience of your group?
- Should I go to the bank instead?





## **Paul Phare**

Development Manager

Energy4All Limited & Associated Co-ops

Unit 26 Trinity Enterprise Centre

Barrow in Furness, LA14 2PN

m: 07775705374

t: 01229 821028

w: [www.energy4all.co.uk](http://www.energy4all.co.uk)

# Strengthening Community Energy Fund Applications

Abbie Raynes – North East and Yorkshire Net Zero Hub



## The North East and Yorkshire Net Zero Hub

- One of 5 Hubs in England
- Funded by the Department for Energy Security and Net Zero – (DESNZ)
- Our aims:
  1. Attract commercial investment into projects and help to develop investment models which accelerate progress to net zero.
  2. Increase the number, quality, and scale of local Net Zero projects being delivered across the region
  3. Develop and support Net Zero elements to wider programmes and initiatives delivered across England
  4. Support a national knowledge transfer programme to improve information sharing, training, and evaluation
  5. Raise local awareness of opportunities for and benefits of local Net Zero investment



## What is the Community Energy Fund?

- £10m grant scheme for urban and rural communities to develop community energy projects.
- The CEF funds are for community-based organisations, which are developing projects for the benefit of the local community.
- Funding is for the development of projects from concept to investable scheme – no Capital funding available.
- Project proposals should ensure **at least 50% community ownership** and must benefit the local community in their final project.
- The fund aims to remove barriers to investment that are currently preventing the development of community-scale projects.



Humshaugh Net Zero CIC – Community Solar Farm  
Feasibility



Circular Malton and Norton CIC – Anaerobic  
Digestion Feasibility

## Eligibility – Organisation

Applications must be led by legally constituted voluntary, community and social enterprise organisations in England only. Eligible incorporations types are as follows:

- Charitable Incorporated Organisation
- Community Benefit Society
- Community Interest Company
- Co-operative Society
- Development Trust
- Pre-Commencement Society
- Registered Charity Registered Social Landlord
- Town or Parish Council



Sewerby Methodist Church



## Eligibility – Type A Projects - Technology Type

The following technologies are eligible for funding towards feasibility work:

- Anaerobic digestion
- Biogas heat network
- Bio liquids/gas/fuels
- Biomass heat network
- Electric vehicle infrastructure (publicly available, incorporating generation/storage)
- Heat pumps
- Heat pump-fed heat networks (e.g. heat zoning for a village)
- Hydropower
- Solar (photo voltaic and thermal)
- Wind power
- Battery storage

Technologies NOT on this list will be considered on a case-by-case basis and you should contact the North East and Yorkshire Net Zero Hub for advice before applying

Be sure to investigate Grid Connection capacities and wait times if required.



Solar on Great Park Community Centre



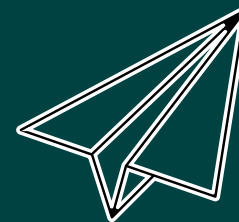
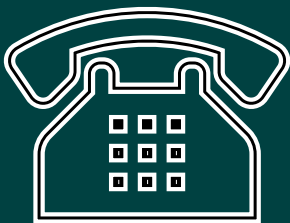
ASHP at Fenham Association of Residents  
Community Centre

## Eligibility – Type B Projects - Project Type

The following types of energy efficiency or advice projects are eligible for feasibility funding:

- Advice targeting fuel poor households
- Advice available to all households, or targeting households that are not fuel poor
- Bulk-buy scheme for energy efficiency measures (multiple households)
- Bulk-buy scheme for renewable and low carbon energy (multiple households)
- Other energy efficiency retrofit programme (multiple households)
- Other renewable energy retrofit programme (multiple households)

Other community-owned energy services models can be considered on a case-by-case basis and should be referred for an initial conversation with the Hub before applying.

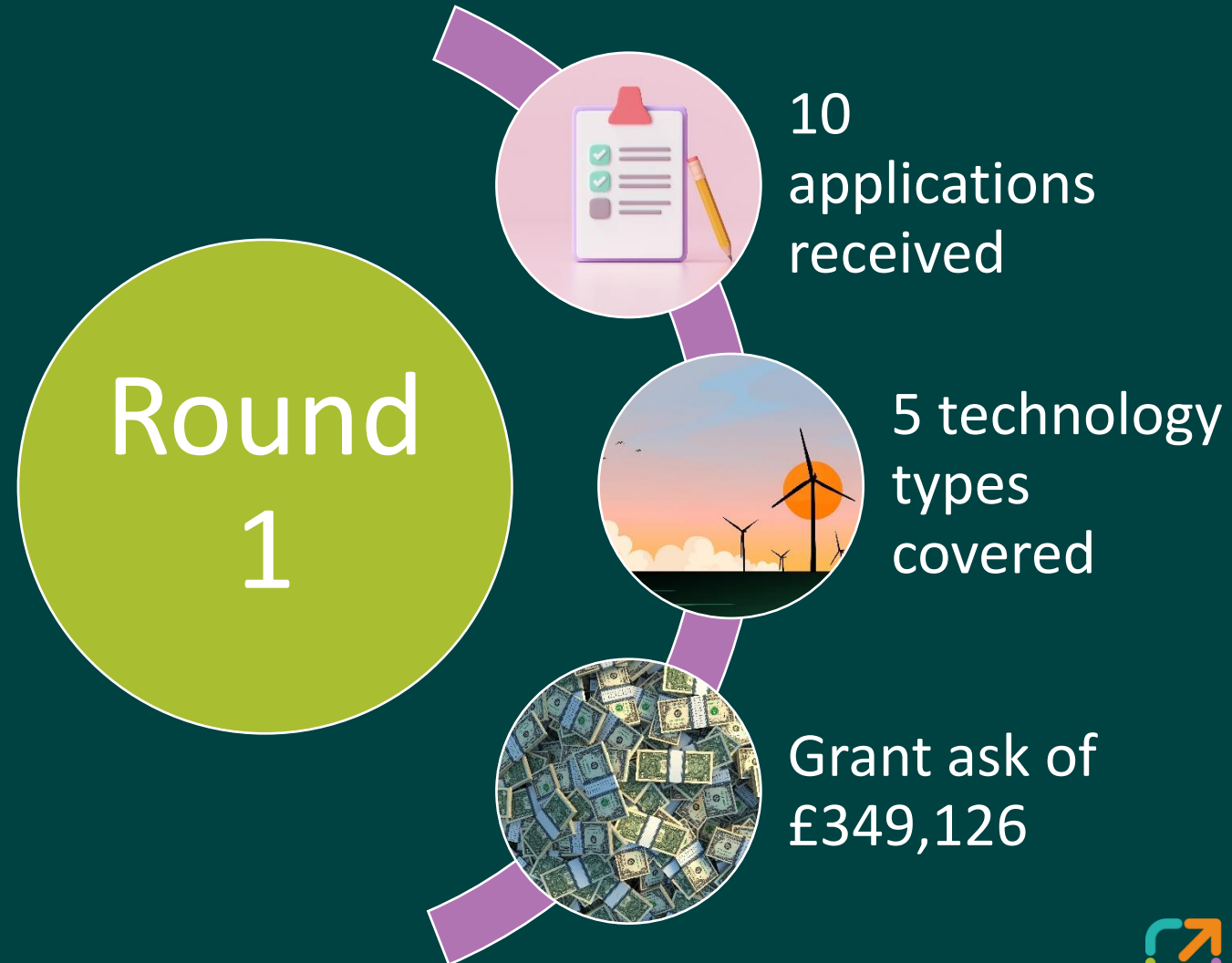


## Stage 1 Applications Vs Stage 2 Applications

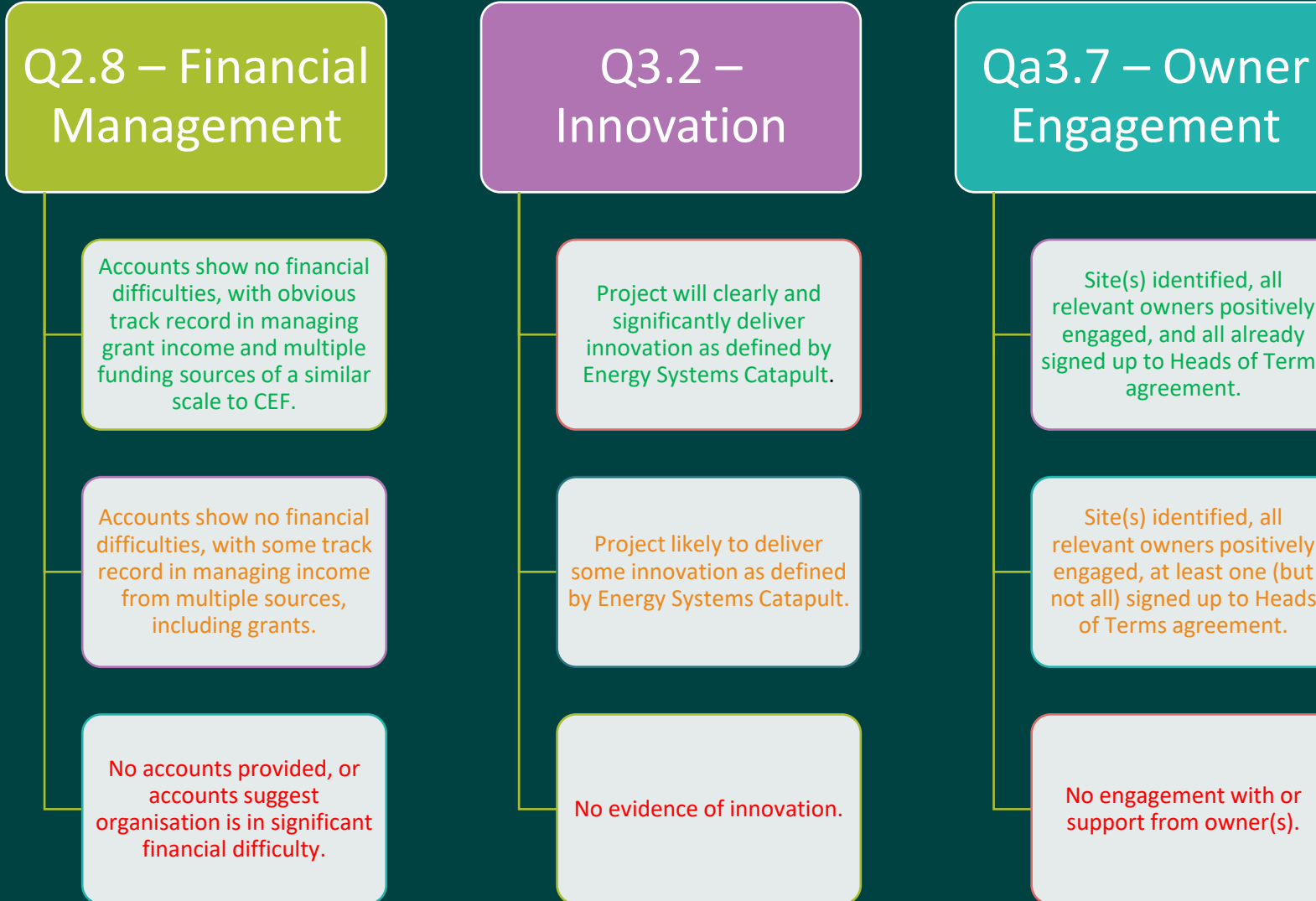
Stage 1 - Feasibility	Stage 2 – Detailed Project Development
Grants of up to £40,000	Grants of up to £100,000
Professional support to scope project feasibility	Professional support to make the project investment ready and/or construction ready
By completion – Full feasibility must have been completed.	By completion - Projects should have obtained planning permission (or have completed the planning process) and have a viable financial model and secured grid connection (as applicable).
Type B Projects eligible	Type B Projects <b>NOT</b> eligible



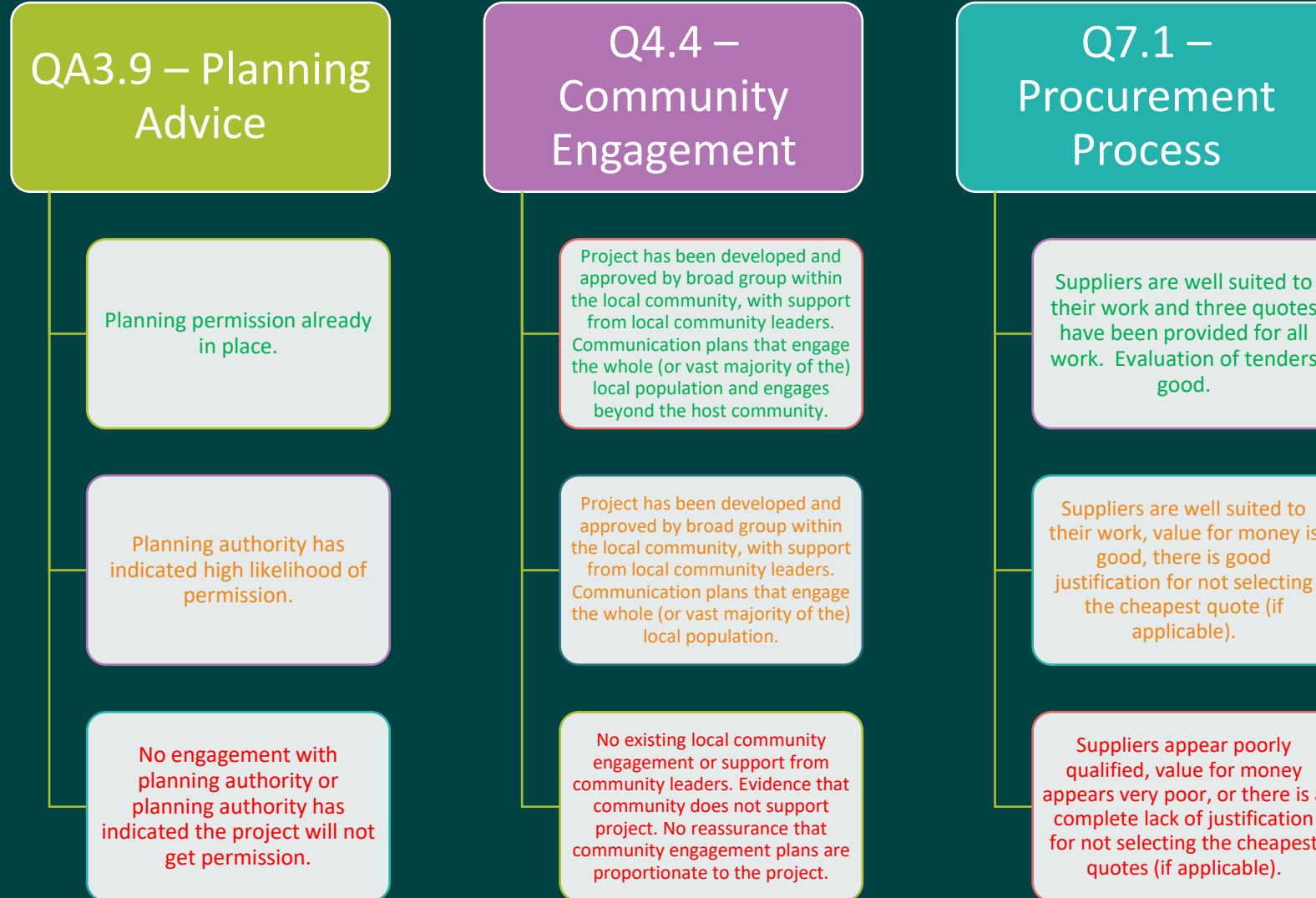
## Round 1 Feedback



## Lower scoring questions from Round 1



## Lower scoring questions from Round 1





## FAQs

Q. When will the next round open?

A. Round 2 is now open! The Hub will be accepting applications until midnight on 05/05/24.



Q. Will more than one application per organisation be accepted?

A. Yes! A community group that has already received funding may apply again for a different project on a different site. These new projects would be eligible for the full Stage 1 and Stage 2 support, providing subsidy control requirements are met. A group may also put in an application for two stage 1 projects at two different sites at the same time, providing they have the capacity to do both.

Q. Will our application be permitted without audited accounts as we're a CIC?

A. Yes – but you may score lower on the financial management question.



Q. Would a hydrogen project be accepted by the Community Energy Fund?

A. Yes – we'd encourage you to discuss this with the Hub prior to application.

Q. When does the programme end and how long do we have to spend the grant?

A. The CEF programme will run until March 2025 – however, all projects will have 12 months to deliver, from the date they are issued their funding offer letter.

## FAQs

Q. Can a Town Council lead a bid, and can they request any of the eligible funding costs?

A. Yes – Town and Parish Councils can lead a bid and are a fully eligible organisations.



Q. Will standard quotes from suppliers be sufficient?

A. We'd encourage applicants to collate 3 quotes to ensure value for money – quotes that are specific to the proposed project would be preferred.

Q. Is it possible to just apply for Stage 2 funding?

A. Yes – providing the eligibility is met, and that a full technical feasibility (Stage 1 activity) has already taken place.

Q. Do you have any lists of providers we can seek tender from?

A. No – the hub cannot recommend specific contractors or consultants; however, we may be able to link you up with similar projects who could advise. National DPS being created through Midlands Hub.

Q. Is a private estate eligible for the Community Energy Fund?

A. Potentially – if the project and final asset would be 50% community owned, and if the application was from an eligible organisation, then this may be eligible.

## North East and Yorkshire Application Timescales

### Round 1 – now closed

Open for applications – 05/12/23

Closes for applications – 05/01/24

### Round 2

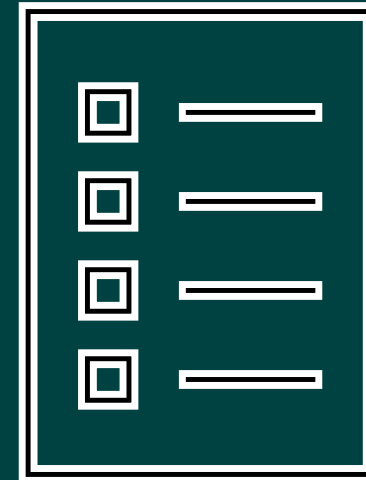
Open for applications – 04/03/24

Closes for applications – 05/05/24

### Round 3

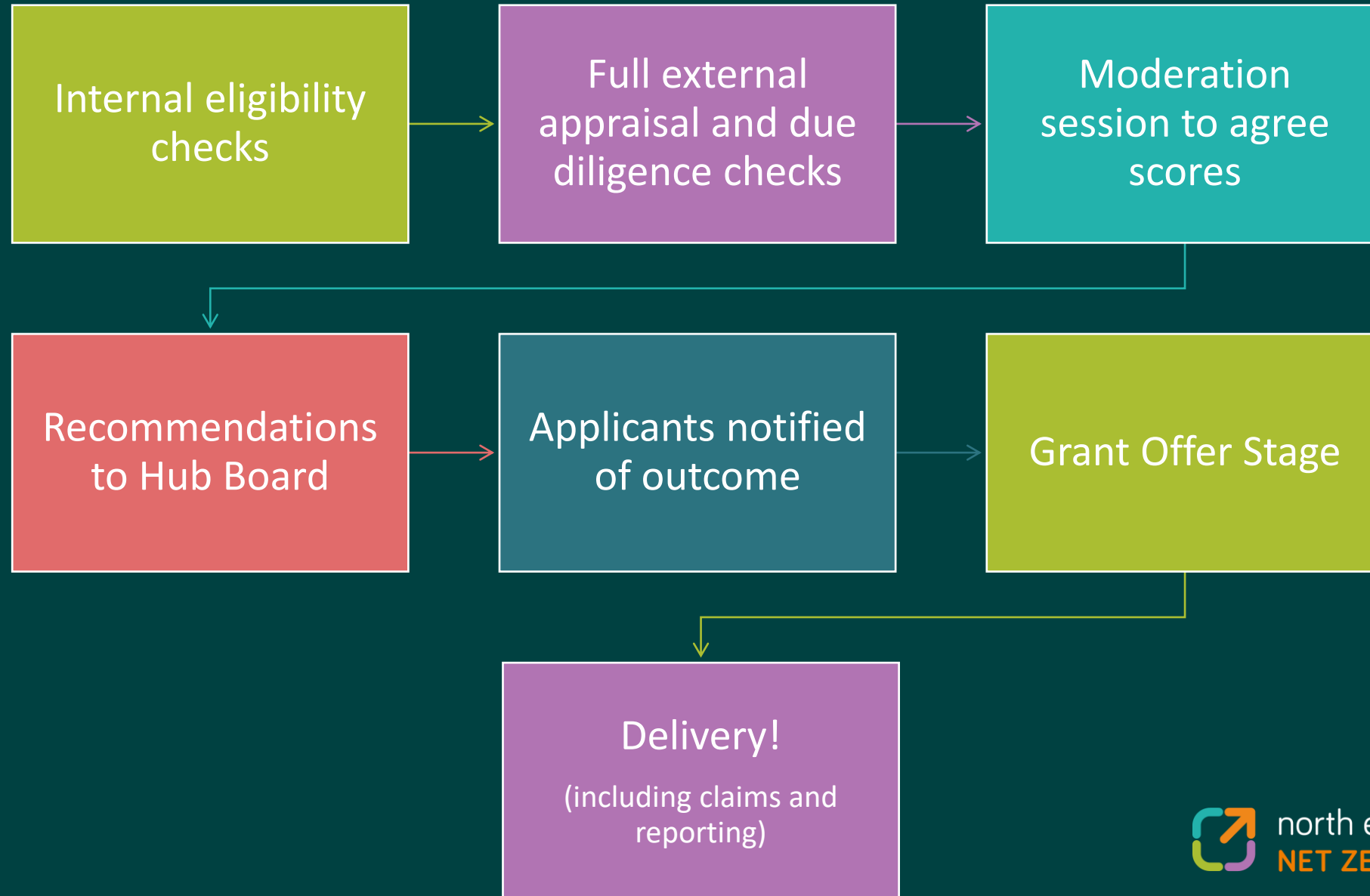
Planned for Summer 2024, subject to funding.

Each of the five Net Zero hubs have different timescales for CEF.





## Following Application



## Reporting Requirements



- Monthly written progress reports to the Hub's Project Manager.
- Meet with the Hub monthly (online) to discuss the projects progress.
- Provide a final case study upon completion of their project, on a template to be provided by the Hub.

## Support from the Hub

- More information on the CEF can be found on our website - [neynetzerohub.com](https://neynetzerohub.com)
- All queries can be sent to - [enquiries@NEYnetzerohub.com](mailto:enquiries@NEYnetzerohub.com)
- **Our Community Energy Team are happy to discuss project proposals and answer questions prior to application!**



## Community Energy Team



Abbie Raynes

Net Zero Hub Project Manager and  
Community Energy Lead



Sue Manson

Community Energy Development  
Officer



Emma Dowson

Project Officer for Community Energy

All enquiries sent to the  
inbox will be passed on to  
one of the Community  
Energy Team who will  
respond ASAP.





## Regional Support



Lizzie Lunn - (North Of Tyne)  
Elizabeth.Lunn@northoftyne-ca.gov.uk



George Lee (South Yorkshire)  
george.lee@southyorkshire-ca.gov.uk



Femi Omoniyi (West Yorkshire)  
Oluwafemi.Omoniyi@westyorks-ca.gov.uk



Harry Baross (Hull and East Riding)  
h.baross@heylep.com



Thiru Annamalai (Tees Valley)  
Thirunavukarasu.Annamalai@teesvalley-ca.gov.uk

We are currently recruiting for our  
York and North Yorkshire based  
Project Manager

Please contact  
[enquiries@NEYnetzerohub.com](mailto:enquiries@NEYnetzerohub.com)  
If you're within the YNY region

## Key Takeaways

- All project proposals must ensure **at least 50% community ownership** and must benefit the local community in their final project.
- Round 2 applications close at midnight on 5<sup>th</sup> May 2024.
- All projects must fall within the North East and Yorkshire Net Zero Hub region.
- CEF cannot provide capital funding for the installation of projects themselves.
- Subsidy control guidelines must be considered before application.
- Type B projects are only eligible for Stage 1 funding.
- Different Hubs have different programme timelines.
- Guidance Documents are available for both stages of funding on our website.
- **All queries can be sent to - [enquiries@NEYnetzerohub.com](mailto:enquiries@NEYnetzerohub.com)**



# Further support

Voluntary Organisations Network North East  
<https://www.vonne.org.uk/>

Community First Yorkshire  
<https://www.communityfirstyorkshire.org.uk/>





# Panel Q&A



**Thank you all for coming!**

