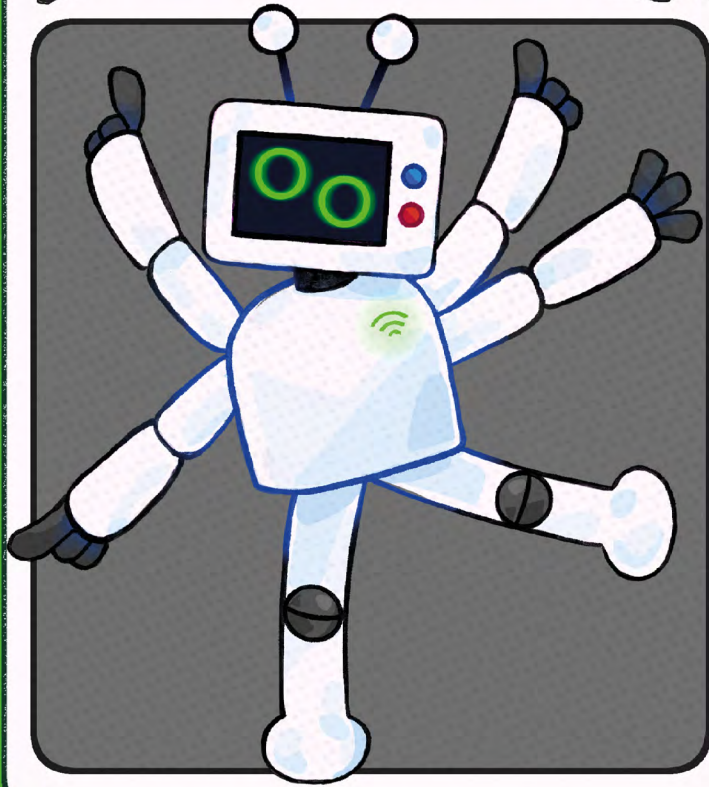


Digitisation



Companion

* COMMON

DIGI is an energy assistant: analysing data from smart meters and appliances, it helps us manage our energy use, reducing waste and increasing our use of green energy sources.

EMISSIONS



POWERS: Boosts the efficiency of other heating technologies, especially Electric Heaters and Heat Pumps. Can help to optimise energy use across the entire energy system.

WEAKNESSES: Some people are nervous of DIGI, so it must ensure that the data it collects is secure to protect our privacy.

Read More:

[Regen: Energy Digitalisation Strategy](#)

[Government Paper: Digitalising our energy system for net zero Strategy and Action Plan 2021](#)

[Energy Saving Trust: Guide to smart meters](#)

