

# HOME IMPROVEMENT

Companion \*/\* COMMON/UNCOMMON

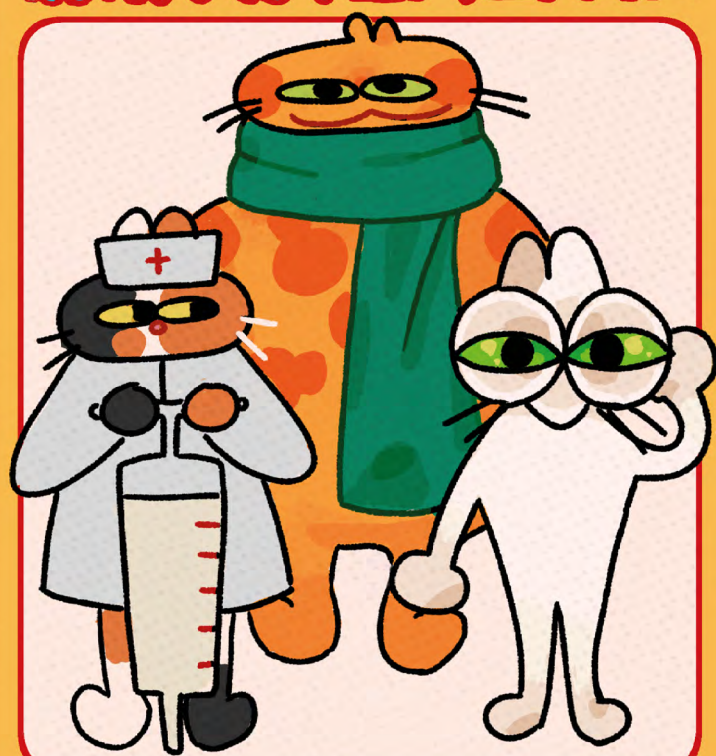
Home improvement are a super team who work together to keep the warmth in and the cold out.

Pictured left are some prolific members of the team: Big I [insulation], Specs [double glazing], Doctor S [draught-proofing].

**EMISSIONS** 

**POWERS:** Destroys draughts and cold patches. Keeps houses warmer with less heating, so boosts the efficiency and decreases the costs and emissions of all other technologies.

**WEAKNESSES:** Getting the right technique for each home is critical, and some can be disruptive or expensive to install.



## Read More:

[Regen: Reinventing Retrofit - How to scale up home energy efficiency in the UK](#)

[Energy Saving Trust: Reducing home heat loss](#)

[What is deep retrofit and why is it so important? - Video](#)

[Affordable Eco Housing; is this what we should be building? - Video](#)

[Regen: Cold homes, sore throats, and hospital beds: A case for public spending on home retrofit](#)

[Greenleaf Road Retrofit Case Study - Video](#)

[The C.H.E.E.S.E Project](#)

[Community Energy England - Local community energy groups can provide home improvement advice](#)

[The Guardian: Britain's leaky homes make the energy crisis worse. Why have governments not fixed them?](#)

